

Specification

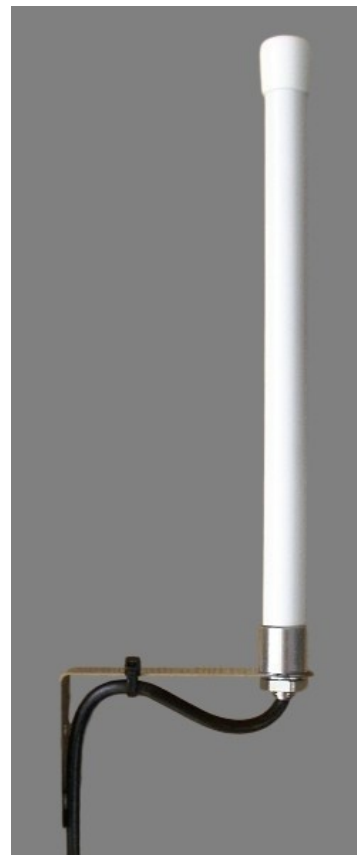
Electrical properties

Frequency	690 – 960/1710 – 2170/2400-2700MHz
Impedance	50 Ohm
Gain	2,15 dBi
V.S.W.R	2.2:1
Return Loss	Please See Data-1
Polarization	Vertical

Mechanical properties

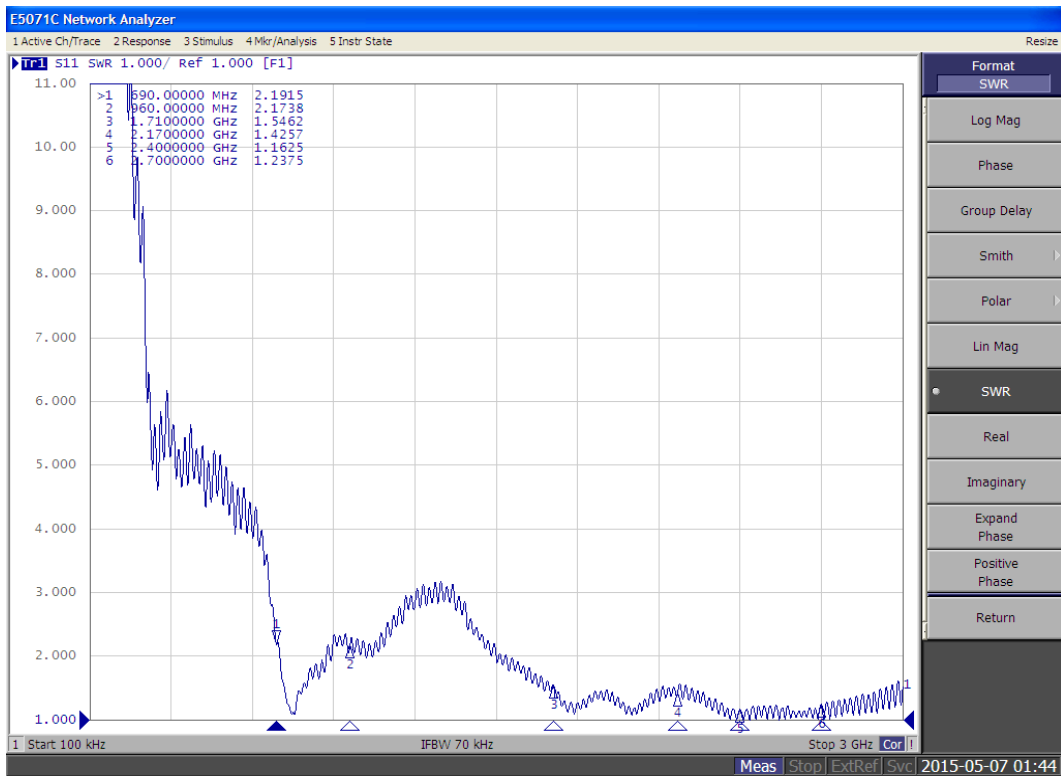
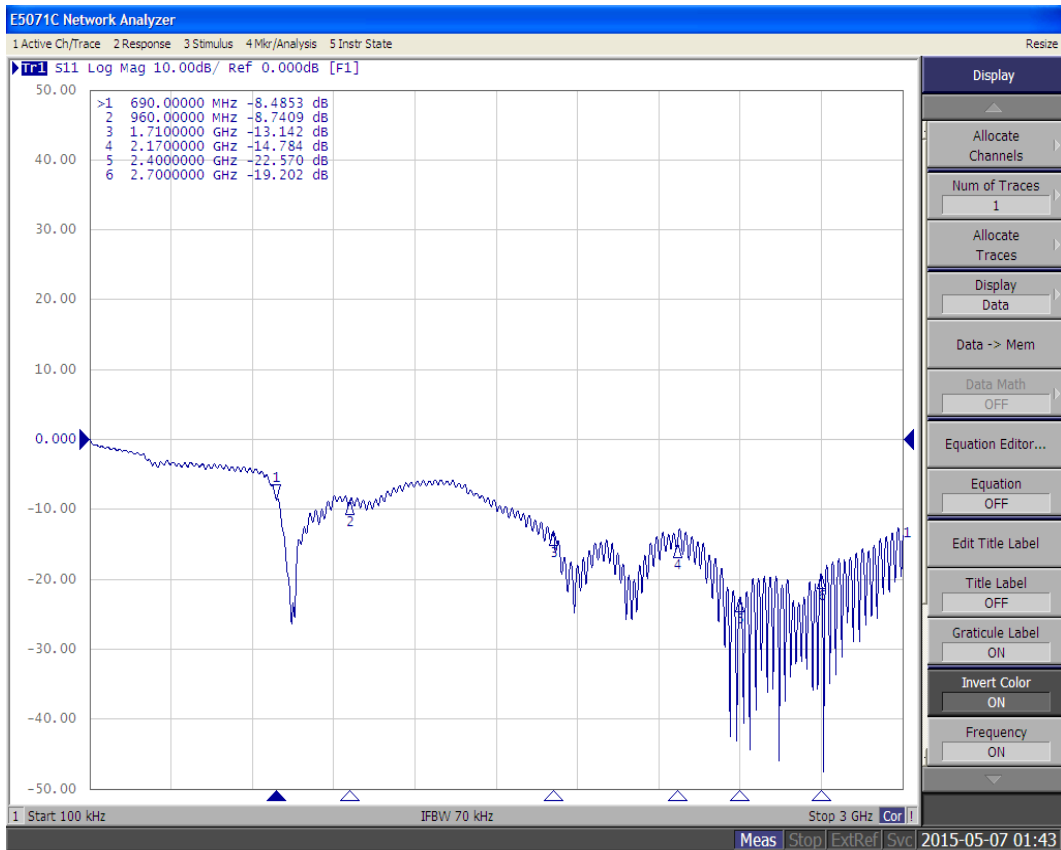
Antenna type	External antenna
Touch type	Screw type
Connector type	SMA male
Antenna dimensions	250 mm±2
Antenna cable total length	Halogen-free CDF 195 Cable, 5m
Antenna color	Black, white
Operating temperature range	-20°C~+60°C
Storage temperature range	-30°C~+70°C

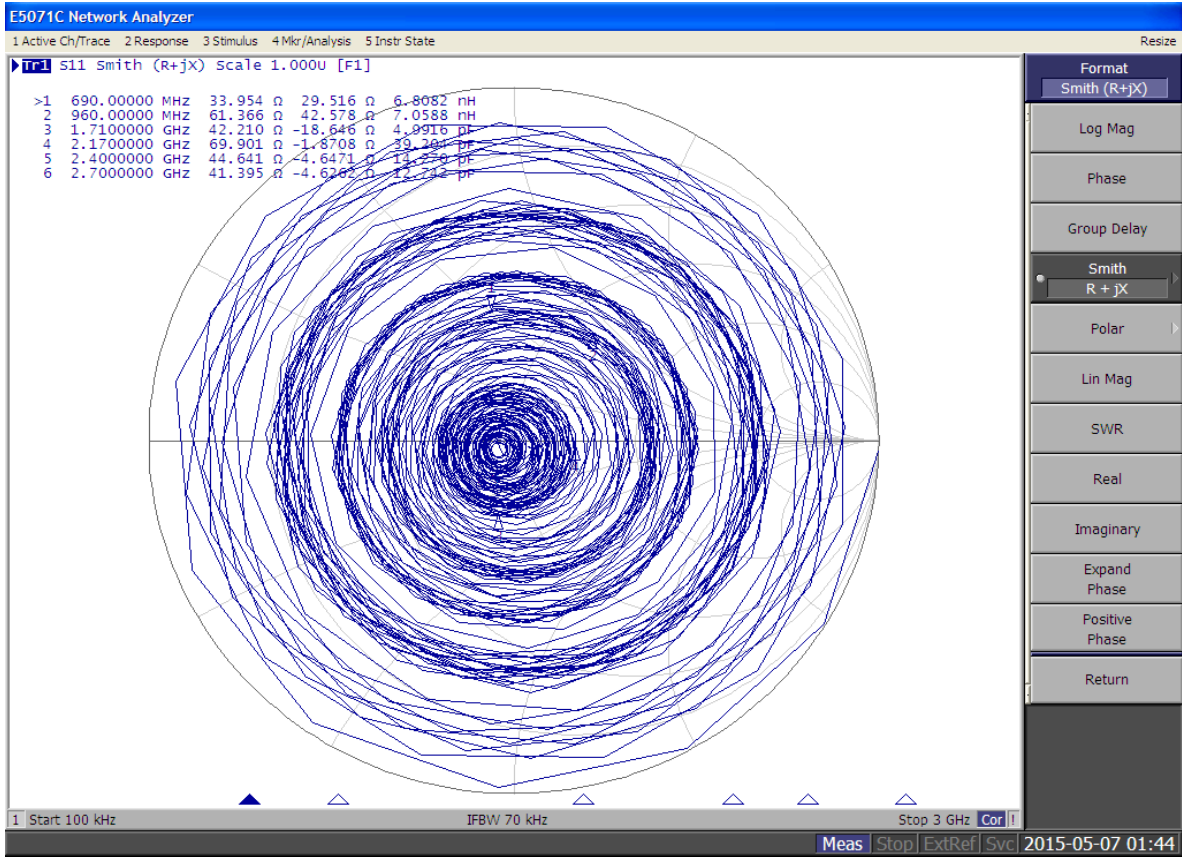
Photos



Ordering info

E-mail sales@proscan-antenna.com
Fax number 0048 22 812 47 98





Total	Frequency (MHz)	700	824	850	900	960	1710	1880
	Directivity (dBi)	2.5469	3.17458	3.47791	4.10112	4.14807	6.12054	5.55701
	Efficiency (dB)	-0.0156725	-1.99626	-1.81068	-2.1875	-2.59834	-2.54195	-1.94074
	Frequency (MHz)	1990	2170	2400	2500	2600	2700	
	Directivity (dBi)	6.1162	3.08404	5.20207	5.9752	6.487	5.84616	
	Efficiency (dB)	-0.939072	-2.49955	-0.202901	-0.369118	-0.573828	-0.930033	

