

Specification

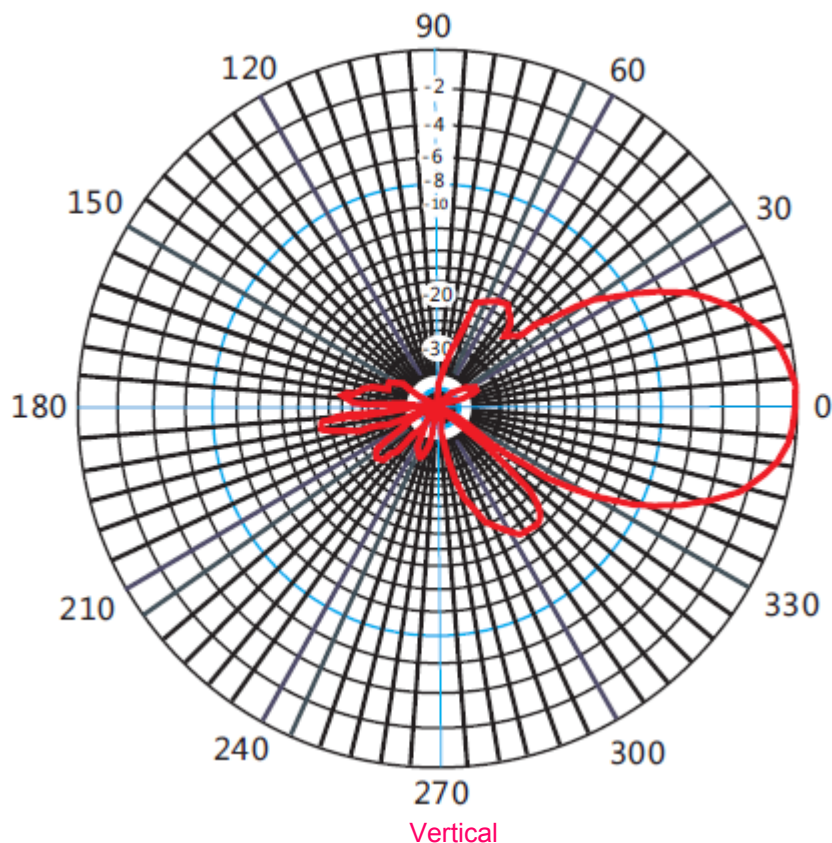
Electrical specification

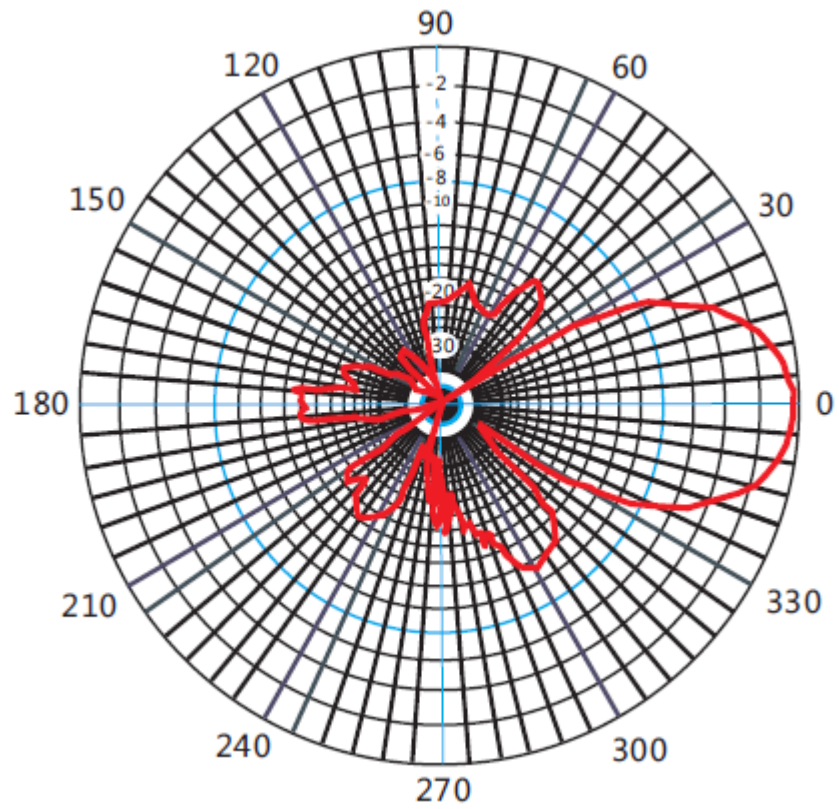
Frequency	1710-2700MHz
Impedance	50 Ω
Gain	18±1dBi
Power max	50W
Polarization	Vertical/Horizontal
Horizontal Beam Width	32 deg
Vertical Beam Width	30 deg
VSWR	<1.5 :1
F/B	≥ 18dB
Cable	2x 10m, LMR-195
Connector	2x SMA m/Customized

Mechanical specification

Radome	PC and PVC
Lightning Protection	Direct Ground
Weight	1.2kg
Mount for Mast Di	30mm to 60mm
Size	520x110mm
Operating Temperature Range	-40 to +70 Degrees
Storage Temperature	-50 to +75 Degrees

Charts

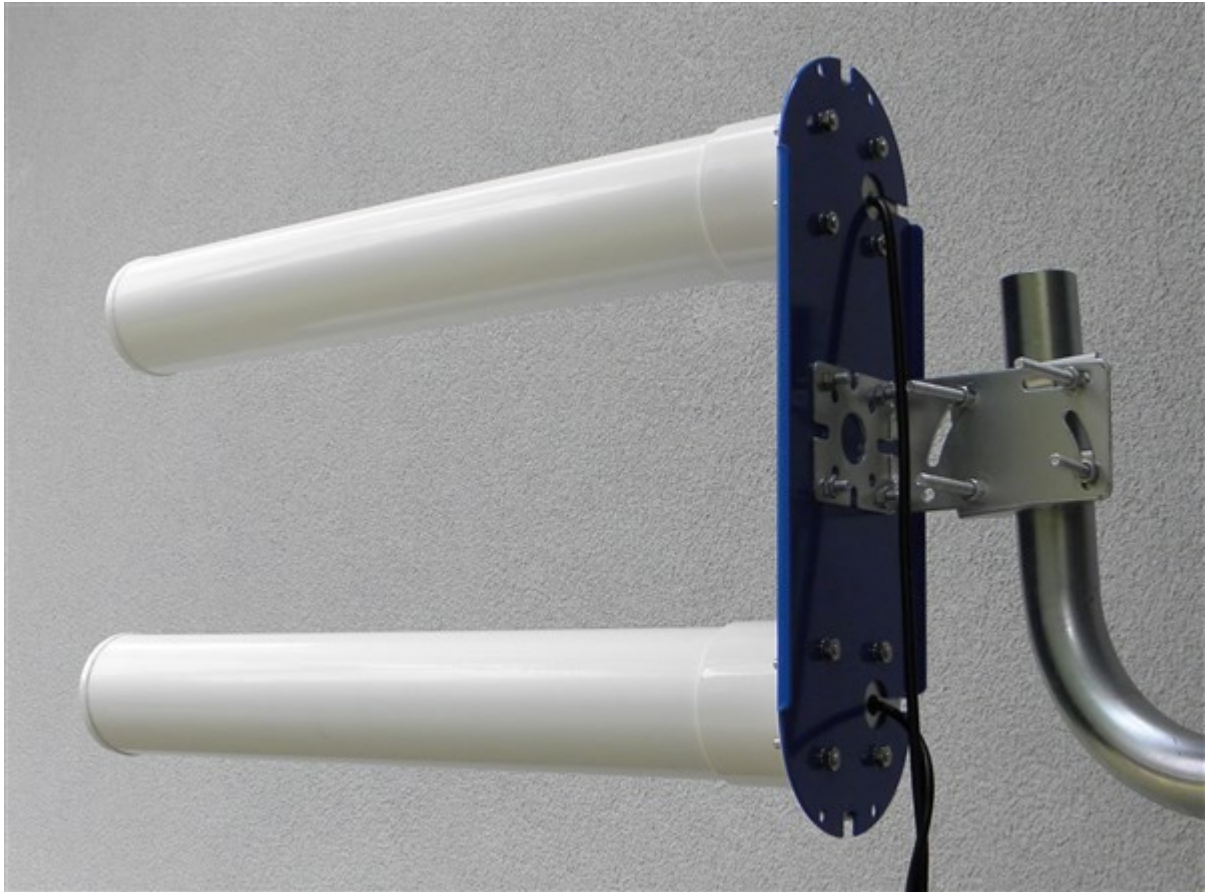




Horizontal

Photos





Ordering info

Part number

E-mail

Fax number

sales@proscan-antenna.com

0048 22 812 47 98

www.proscan-antenna.com